

At a glance

- Walk-through Red Squirrel experience
- Otter ponds & observation holt
- Scottish Wildcats ● Owl flying display
- Observation Badger sett ● Foxes
- Close-up viewing at the keeper talks
- Free parking ● Wheelchair accessible
- Coffee shop ● Picnic areas ● Gift shop
- Pip's Corner children's activity area



Prices *prices held for 2017*

Adult: £11.50 Senior (age 65+): £10.50
Child (age 3-15): £8.50
Family (2 adults & 2 children): £37
Essential Carers: Free
Groups (15+) receive a 10% discount

Find out more

www.britishwildlifecentre.co.uk
email: info@britishwildlifecentre.co.uk
telephone: 01342 834658

Follow us on the Keeper's Blog,
Facebook, Twitter and Flickr



Opening times 2017

We open every weekend and public holiday of the year (excluding 24, 25, & 26 December) and daily during these school holiday periods:

Spring half term: Sat 11 Feb - Sun 19 Feb
Easter holiday: Sat 1 Apr - Mon 17 Apr
Summer half term: Sat 27 May - Sun 4 Jun
Summer holiday: Sat 22 Jul - Sun 3 Sep
Autumn half term: Sat 21 Oct - Sun 29 Oct
Christmas holiday: Wed 27 Dec - Wed 3 Jan

Open 10am - 5pm (Nov - Jan 10am - 4pm)
Last admissions 1 hour before closing

We are closed to the public on weekdays in school term time so are available for pre-booked school trips, group visits and photography days.

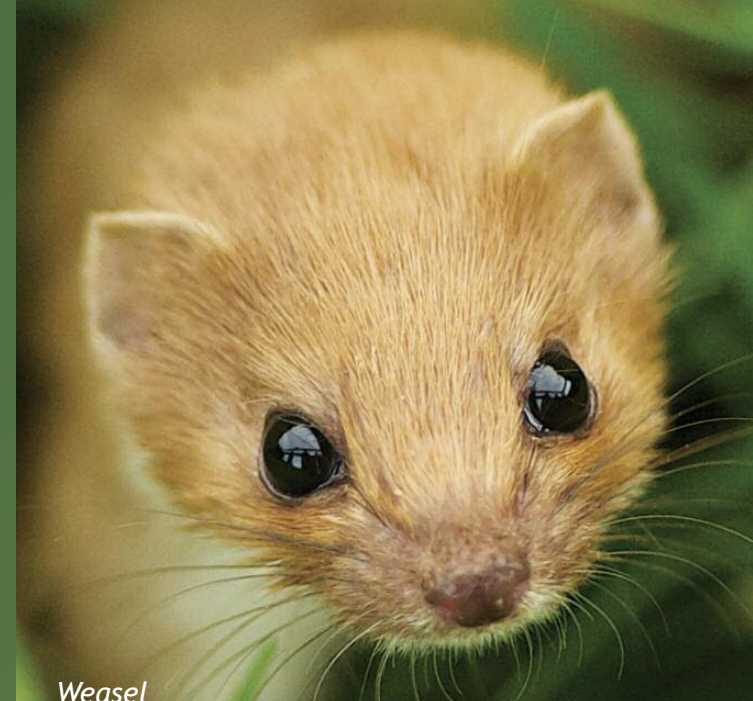
Where to find us

We're on the A22, near Lingfield, just 10 minutes from the M25 (Jcn 6 / Godstone).
Eastbourne Road (A22), Newchapel,
Lingfield, Surrey RH7 6LF **tel:** 01342 834658
email: info@britishwildlifecentre.co.uk
www.britishwildlifecentre.co.uk



British Wildlife Centre

Home to the finest collection of native wildlife in Britain, from tiny harvest mice to magnificent red deer



Weasel

Over 40 different species!

British Wildlife Centre



On the A22 nr Lingfield, Surrey RH7 6LF
www.britishwildlifecentre.co.uk

Discover Britain's Wonderful Wildlife

In the heart of the East Surrey countryside, the British Wildlife Centre is home to the UK's finest collection of native species, many rarely seen in the wild. Our animals live in large enclosures, landscaped to reflect their natural habitats.

Here you can visit Britain's first walk-through red squirrel enclosure and stroll among free-ranging red squirrels in their own copse.

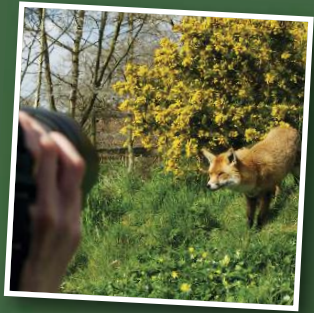


So much to see year round

- Walk among Red Squirrels
- Observation Otter holt
- Pine Martens & Polecats
- Observation Badger sett
- Fox families ● Deer park
- Scottish Wildcats
- Owl flying display
- Night creatures in the Nocturnal House
- Animals of the Barn and Hedgerow
- Wetland nature reserve boardwalk
- Fantastic photo opportunities!

Exclusive visits

On weekdays in school term time we are closed to the public and are available for pre-booked school trips, group visits and photography events. Our photography days offer unrivalled photo opportunities with special access to our wonderful wildlife. We also offer venue facilities for professional photography and filming.



Keeper talks

Our popular keeper talks are a great way to get the most from your visit. They bring you closer to the wildlife that is all around us but is seldom seen. Talks take place throughout the day, giving you the chance to learn more about native animals and the challenges they face in the wild.



We offer...

- Free parking
- Wheelchair access
- Wildlife gift shop
- Coffee shop
- Picnic areas
- Coach parking
- Membership
- Animal adoption
- Half-hourly keeper talks
- Pip's Corner activity area for your young cubs and kittens! (high season only)



Conserving native wildlife

By visiting us you are helping to fund our vital conservation projects and breeding programmes to save Britain's most vulnerable species, such as red squirrels, water voles and Scottish wildcats. Complementary to the main Centre, our 25 acre wetland nature reserve provides valuable habitat for a huge variety of wild species that make it their home.

